



FLEXIAGENT



## Norwood Road

Southport, PR8 6EL

**£800 Per Month**

Norwood Road in the charming town of Southport, this delightful two-bedroom ground floor flat offers a perfect blend of comfort and convenience. Spanning 668 square feet, the property features a spacious reception room that invites relaxation and social gatherings.

The flat comprises two well-proportioned bedrooms, providing ample space for rest and personalisation. The bathroom is thoughtfully designed, ensuring functionality and ease for daily routines.

One of the standout features of this property is the private off-road parking, a rare find in such a desirable location, allowing for hassle-free access and peace of mind.

This flat is ideal for those seeking a comfortable living space in a vibrant community, with local amenities and transport links just a stone's throw away. This property presents an excellent opportunity to enjoy the best of Southport living.

- Two bedroom ground floor flat
- Private off-road parking
- Located on Norwood Road
- One reception room
- 668 sq ft of space
- Close to local amenities
- Easy access to transport
- Viewing recommended

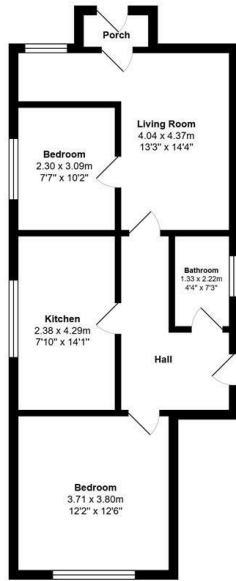
### Viewing

Please contact our Flexi-Agent Southport Lettings Office on 01704 889455 if you wish to arrange a viewing appointment for this property or require further information.



FLEXIAGENT

## Floor Plan

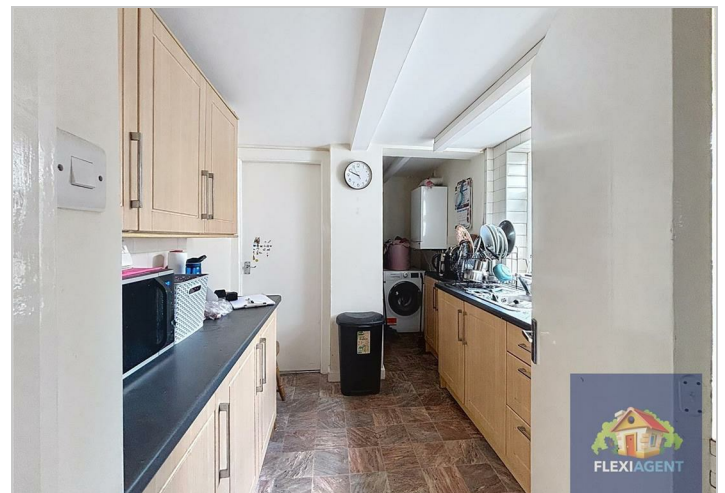
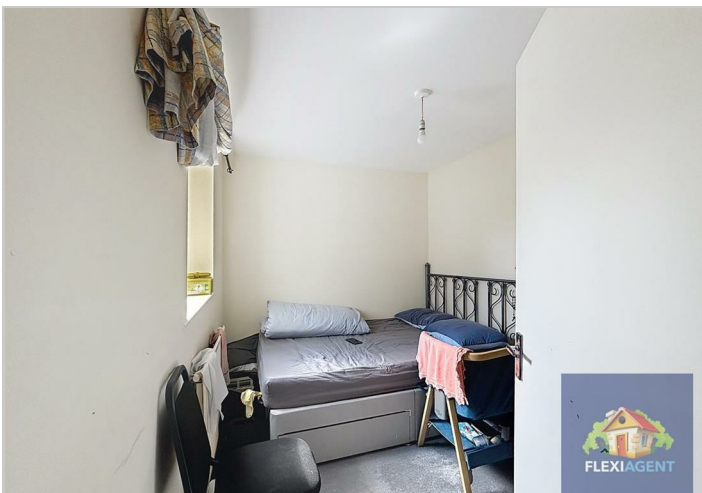
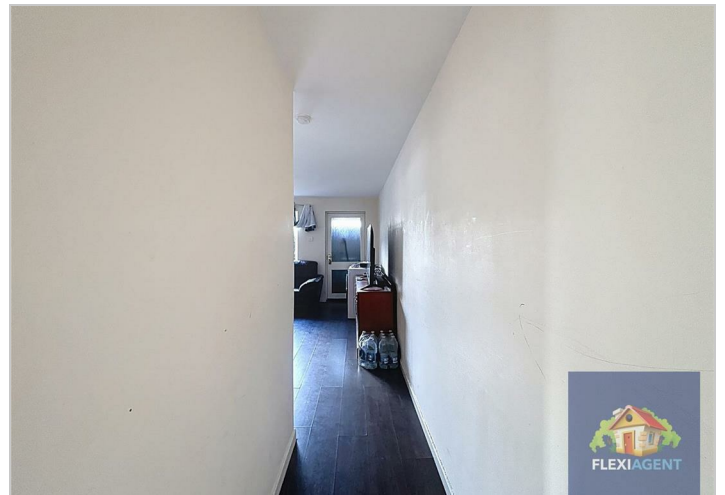
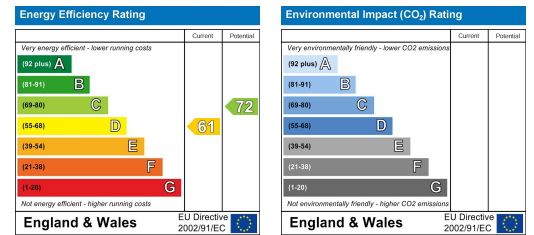


Total Area: 62.0 m<sup>2</sup> ... 668 ft<sup>2</sup>  
 All measurements are approximate and for display purposes only

## Area Map



## Energy Efficiency Graph



These particulars, whilst believed to be accurate are set out as a general outline only for guidance and do not constitute any part of an offer or contract. Intending purchasers should not rely on them as statements of representation of fact, but must satisfy themselves by inspection or otherwise as to their accuracy. No person in this firm's employment has the authority to make or give any representation or warranty in respect of the property.